

CERDA

INDUSTRIES

INNOVATIVE • VERSATILE • TOUGH • DURABLE



WWW.CERDAINDUSTRIES.COM

TRENCH SHORING SYSTEMS



WELCOME TO

CERDA INDUSTRIES

One of the most versatile trench shoring manufacturing companies in the industry. Our vast experience allows us to manufacture products that are safe, reliable and cost effective for our customers. We strive for the highest quality workmanship and the quickest deliveries in the industry.

Cerda is best known for its innovation of new products in the industry. If your project extends beyond standard safety equipment, call CERDA! We can provide the solution.

Cerda shoring and shielding products are designed by a Registered Professional Engineer. All products meet or exceed OSHA requirements.

MISSION STATEMENT

Our mission statement is simple.

- ◆ First and foremost, we provide products that prevent trench casualties.
◆ We provide Pre-Engineered, cost effective solutions to trench safety challenges that could be extremely costly to the end user.
◆ Cerda thrives on three rules of customer service: Receptive, Responsive, Reliable

TRENCH SHIELDS

3" Wall Trench Shields 5
4" Wall Trench Shields 6
6" Wall Trench Shields 8
8" Wall Trench Shields 10
Square Manhole Boxes 12
4 Sided - Water Tap Boxes 13
Octagon Shields 14
Round Corrugated Manhole Shields 15
Bedding Boxes/Rock Boxes..... 16
Pit Kit Brackets 17

ALUMINUM SHIELDS

SAF Shield..... 18
SAV Shield..... 19
CBAS/Build-A-Shield Modular System 20

HYDRAULIC VERTICAL SHORES

Hydraulic Vertical Shores..... 21

OTHER PRODUCTS

G3 Sheeting Guide System 22
Sediment Tanks 24
Slide Rail System 25
Tire Cleaner/Rumble Grids..... 26
Manhole Brace 26
Pipe Puller 27



Proudly Made in the USA



TRENCH SHIELDS

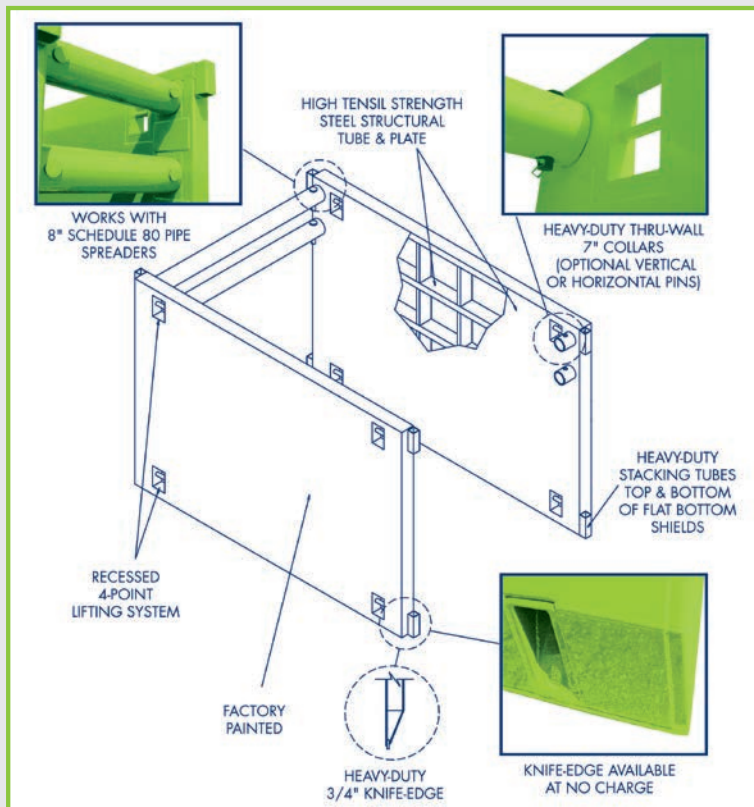
3" WALL TRENCH SHIELDS



CERDA Industries' Trench Shields are static trench protection systems that cover a wide variety of applications and depth requirements. Cerda Industries has many models that range in wall thickness, height, length and psf ratings.

Although Trench Shielding is the most common method of Trench Safety protection in the industry, Cerda Industries prides itself on being the leader of custom trench shields to meet your specific needs in challenging applications.

STANDARD FEATURES



AVAILABLE OPTIONS

- Knife Edge or Flat Bottom
- Collar wall thickness 1/2" standard, upgrade 3/4" or 1"
- Foam Filled Shields
- 5th Collar available
- Specialty colors to match your fleet
- Push Pads

3" TRENCH SHIELDS • STANDARD LIGHTWEIGHT SERIES

| MODEL | SIZE | | PIPE CLEARANCE | WEIGHT (lb) (est) | SHIELD CAPACITY (psf) (lb) | DEPTH RATING C-60 |
|---------------------------|------|-----|----------------|-------------------|----------------------------|-------------------|
| | H | L | | | | |
| SINGLE WALL SHIELD | | | | | | |
| C3M46SW | 4' | 6' | 24" | 1024 | 2304 | 39' |
| C3M48SW | 4' | 8' | 24" | 1111 | 1175 | 21' |
| C3M410SW | 4' | 10' | 24" | 1274 | 711 | 13' |
| C3M412SW | 4' | 12' | 24" | 1442 | 476 | 10' |
| C3M66SW | 6' | 6' | 38" | 1356 | 1951 | 34' |
| C3M68SW | 6' | 8' | 38" | 1474 | 1016 | 19' |
| C3M610SW | 6' | 10' | 38" | 2039 | 614 | 13' |
| C3M612SW | 6' | 12' | 38" | 2381 | 411 | 10' |
| C3M86SW | 8' | 6' | 51" | 1599 | 1141 | 22' |
| C3M88SW | 8' | 8' | 51" | 1944 | 856 | 18' |
| C3M810SW | 8' | 10' | 51" | 2252 | 566 | 13' |
| C3M812SW | 8' | 12' | 51" | 2566 | 379 | 10' |
| DOUBLE WALL SHIELD | | | | | | |
| C3M68DW | 6' | 8' | 38" | 1937 | 2102 | 37' |
| C3M610DW | 6' | 10' | 38" | 2327 | 1508 | 27' |
| C3M612DW | 6' | 12' | 38" | 2773 | 826 | 16' |
| C3M88DW | 8' | 8' | 51" | 2446 | 1260 | 24' |
| C3M810DW | 8' | 10' | 51" | 3026 | 803 | 17' |
| C3M812DW | 8' | 12' | 51" | 3518 | 439 | 11' |

3" TRENCH SHIELDS • EXTRA LIGHTWEIGHT SERIES

| MODEL | SIZE | | PIPE CLEARANCE | WEIGHT (lb) (est) | SHIELD CAPACITY (psf) (lb) | DEPTH RATING C-60 |
|---------------------------|------|-----|----------------|-------------------|----------------------------|-------------------|
| | H | L | | | | |
| SINGLE WALL SHIELD | | | | | | |
| C3L46 | 4' | 6' | 24" | 674 | 1185 | 22' |
| C3L48 | 4' | 8' | 24" | 843 | 885 | 16' |
| C3L410 | 4' | 10' | 24" | 1012 | 540 | 11' |
| C3L412 | 4' | 12' | 24" | 1181 | 308 | 7' |
| C3L66 | 6' | 6' | 24" | 965 | 1292 | 24' |
| C3L68 | 6' | 8' | 24" | 1168 | 805 | 16' |
| C3L610 | 6' | 10' | 24" | 1406 | 490 | 11' |
| C3L612 | 6' | 12' | 24" | 1649 | 280 | 7' |
| C3L86 | 8' | 6' | 24" | 1187 | 1169 | 23' |
| C3L88 | 8' | 8' | 24" | 1500 | 758 | 16' |
| C3L810 | 8' | 10' | 24" | 1802 | 465 | 11' |
| C3L812 | 8' | 12' | 24" | 2109 | 266 | 8' |



4" WALL TRENCH SHIELDS



*Light Series,
Manufactured
with Top Quality*

| 4" TRENCH SHIELDS • LIGHT SERIES | | | | | | |
|----------------------------------|------|-----|----------------|-------------------|----------------------------|-------------------|
| MODEL | SIZE | | PIPE CLEARANCE | WEIGHT (lb) (est) | SHIELD CAPACITY (psf) (lb) | DEPTH RATING C-60 |
| | H | L | | | | |
| SINGLE WALL SHIELD | | | | | | |
| C4L46SW | 4' | 6' | 16" | 1717 | 3447 | 50' |
| C4L48SW | 4' | 8' | 16" | 1973 | 1688 | 29' |
| C4L410SW | 4' | 10' | 16" | 2229 | 999 | 18' |
| C4L412SW | 4' | 12' | 16" | 2485 | 659 | 13' |
| C4L66SW | 6' | 6' | 40" | 2088 | 1690 | 30' |
| C4L68SW | 6' | 8' | 40" | 2441 | 1267 | 23' |
| C4L610SW | 6' | 10' | 40" | 2795 | 948 | 18' |
| C4L612SW | 6' | 12' | 40" | 3148 | 626 | 13' |
| C4L88SW | 8' | 8' | 64" | 2910 | 908 | 19' |
| C4L810SW | 8' | 10' | 64" | 3361 | 726 | 16' |
| C4L812SW | 8' | 12' | 64" | 3812 | 604 | 14' |
| DOUBLE WALL SHIELD | | | | | | |
| C4L412 | 4' | 12' | 16" | 2975 | 1733 | 30' |
| C4L414 | 4' | 14' | 16" | 3312 | 1228 | 22' |
| C4L416 | 4' | 16' | 16" | 3650 | 917 | 17' |
| C4L68 | 6' | 8' | 40" | 2931 | 2391 | 41' |
| C4L610 | 6' | 10' | 40" | 3407 | 1913 | 34' |
| C4L612 | 6' | 12' | 40" | 3883 | 1594 | 29' |
| C4L614 | 6' | 14' | 40" | 4359 | 1227 | 23' |
| C4L616 | 6' | 16' | 40" | 4835 | 915 | 18' |
| C4L88 | 8' | 8' | 64" | 3562 | 2315 | 41' |
| C4L810 | 8' | 10' | 64" | 4177 | 1852 | 34' |
| C4L812 | 8' | 12' | 64" | 4791 | 1543 | 29' |
| C4L814 | 8' | 14' | 64" | 5405 | 1226 | 24' |
| C4L816 | 8' | 16' | 64" | 6019 | 959 | 20' |

4" WALL TRENCH SHIELDS



*Cerda Products
Meet or
Exceed OSHA
Requirements*

| 4" TRENCH SHIELDS • MEDIUM SERIES | | | | | | |
|-----------------------------------|------|-----|----------------|-------------------|----------------------------|-------------------|
| MODEL | SIZE | | PIPE CLEARANCE | WEIGHT (lb) (est) | SHIELD CAPACITY (psf) (lb) | DEPTH RATING C-60 |
| | H | L | | | | |
| DOUBLE WALL SHIELD | | | | | | |
| C4M412 | 4' | 12' | 16" | 3464 | 2619 | 44' |
| C4M416 | 4' | 16' | 16" | 4303 | 1385 | 24' |
| C4M420 | 4' | 20' | 16" | 5141 | 855 | 17' |
| C4M424 | 4' | 24' | 16" | 5980 | 579 | 12' |
| C4M612 | 6' | 12' | 40" | 4617 | 2631 | 45' |
| C4M616 | 6' | 16' | 40" | 5814 | 1391 | 25' |
| C4M618 | 6' | 18' | 40" | 6412 | 1078 | 20' |
| C4M620 | 6' | 20' | 40" | 7011 | 859 | 19' |
| C4M624 | 6' | 24' | 40" | 8207 | 583 | 13' |
| C4M88 | 8' | 8' | 64" | 4215 | 2639 | 48' |
| C4M810 | 8' | 10' | 64" | 4993 | 2111 | 40' |
| C4M812 | 8' | 12' | 64" | 5770 | 1767 | 32' |
| C4M816 | 8' | 16' | 64" | 7325 | 1326 | 25' |
| C4M820 | 8' | 20' | 64" | 8880 | 958 | 20' |
| C4M824 | 8' | 24' | 64" | 10435 | 584 | 13' |
| C4M1016 | 10' | 16' | 84" | 9141 | 969 | 21' |
| C4M1020 | 10' | 20' | 84" | 11054 | 775 | 17' |



Proudly Made in the USA

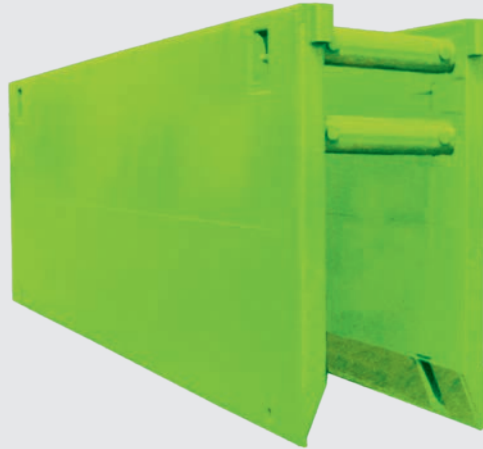


6" WALL TRENCH SHIELDS

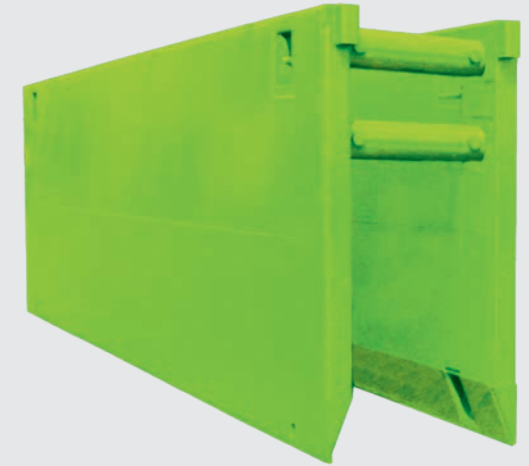
6" WALL TRENCH SHIELDS



*Medium Series,
our
Most Popular*



*Heavy Series,
Competitively
Priced*



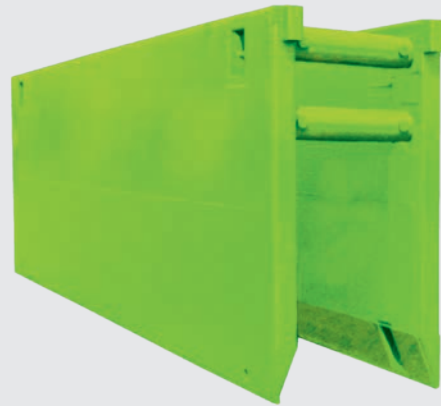
| 6" TRENCH SHIELDS • MEDIUM SERIES | | | | | | |
|-----------------------------------|------|-----|----------------|-------------------|----------------------------|-------------------|
| MODEL | SIZE | | PIPE CLEARANCE | WEIGHT (lb) (est) | SHIELD CAPACITY (psf) (lb) | DEPTH RATING C-60 |
| | H | L | | | | |
| DOUBLE WALL SHIELD | | | | | | |
| C6M416 | 4' | 16' | 16" | 4756 | 2247 | 38' |
| C6M420 | 4' | 20' | 16" | 5703 | 1387 | 24' |
| C6M424 | 4' | 24' | 16" | 6651 | 941 | 17' |
| C6M426 | 4' | 26' | 16" | 7125 | 794 | 15' |
| C6M428 | 4' | 28' | 16" | 7599 | 679 | 13' |
| C6M616 | 6' | 16' | 40" | 6430 | 2240 | 39' |
| C6M620 | 6' | 20' | 40" | 7775 | 1382 | 25' |
| C6M624 | 6' | 24' | 40" | 9120 | 938 | 19' |
| C6M626 | 6' | 26' | 40" | 9792 | 791 | 16' |
| C6M628 | 6' | 28' | 40" | 10464 | 677 | 14' |
| C6M816 | 8' | 16' | 64" | 8105 | 2143 | 38' |
| C6M820 | 8' | 20' | 64" | 9847 | 1379 | 26' |
| C6M824 | 8' | 24' | 64" | 11589 | 935 | 19' |
| C6M826 | 8' | 26' | 64" | 12459 | 789 | 17' |
| C6M828 | 8' | 28' | 64" | 13330 | 723 | 16' |
| C6M1016 | 10' | 16' | 84" | 10175 | 1520 | 29' |
| C6M1020 | 10' | 20' | 84" | 12313 | 1216 | 25' |
| C6M1024 | 10' | 24' | 84" | 14452 | 932 | 20' |
| C6M1026 | 10' | 26' | 84" | 15521 | 788 | 18' |
| C6M1028 | 10' | 28' | 84" | 16590 | 674 | 16' |

| 6" TRENCH SHIELDS • HEAVY SERIES | | | | | | |
|----------------------------------|------|-----|----------------|-------------------|----------------------------|-------------------|
| MODEL | SIZE | | PIPE CLEARANCE | WEIGHT (lb) (est) | SHIELD CAPACITY (psf) (lb) | DEPTH RATING C-60 |
| | H | L | | | | |
| DOUBLE WALL SHIELD | | | | | | |
| C6H416 | 4' | 16' | 16" | 5407 | 3141 | 50' |
| C6H420 | 4' | 20' | 16" | 6519 | 1940 | 33' |
| C6H424 | 4' | 24' | 16" | 7630 | 1316 | 24' |
| C6H426 | 4' | 26' | 16" | 8185 | 1111 | 20' |
| C6H428 | 4' | 28' | 16" | 8741 | 950 | 17' |
| C6H616 | 6' | 16' | 40" | 7409 | 3140 | 50' |
| C6H620 | 6' | 20' | 40" | 8999 | 1939 | 34' |
| C6H624 | 6' | 24' | 40" | 10588 | 1315 | 24' |
| C6H626 | 6' | 26' | 40" | 11383 | 1110 | 21' |
| C6H628 | 6' | 28' | 40" | 12178 | 950 | 18' |
| C6H816 | 8' | 16' | 64" | 9411 | 2350 | 41' |
| C6H820 | 8' | 20' | 64" | 11479 | 1858 | 34' |
| C6H824 | 8' | 24' | 64" | 13547 | 1313 | 26' |
| C6H826 | 8' | 26' | 64" | 14581 | 1108 | 22' |
| C6H828 | 8' | 28' | 64" | 15615 | 948 | 20' |
| C6H1016 | 10' | 16' | 84" | 11807 | 2097 | 40' |
| C6H1020 | 10' | 20' | 84" | 14353 | 1677 | 32' |
| C6H1024 | 10' | 24' | 84" | 16900 | 1310 | 26' |
| C6H1026 | 10' | 26' | 84" | 18173 | 1106 | 23' |
| C6H1028 | 10' | 28' | 84" | 19446 | 947 | 20' |

Your Safety Is Our Priority



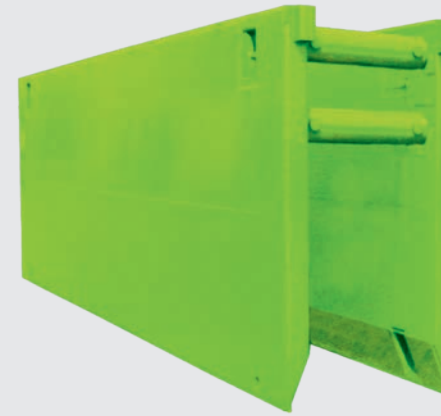
8" WALL TRENCH SHIELDS



*Medium Series,
Engineered
to Perfection*

| 8" TRENCH SHIELDS • MEDIUM SERIES | | | | | | |
|-----------------------------------|------|-----|----------------|-------------------|----------------------------|-------------------|
| MODEL | SIZE | | PIPE CLEARANCE | WEIGHT (lb) (est) | SHIELD CAPACITY (psf) (lb) | DEPTH RATING C-60 |
| | H | L | | | | |
| DOUBLE WALL SHIELD | | | | | | |
| C8M416 | 4' | 16' | 16" | 5381 | 3138 | 50' |
| C8M420 | 4' | 20' | 16" | 6436 | 1938 | 33' |
| C8M424 | 4' | 24' | 16" | 7418 | 1314 | 24' |
| C8M426 | 4' | 26' | 16" | 7945 | 1109 | 20' |
| C8M428 | 4' | 28' | 16" | 8472 | 949 | 17' |
| C8M616 | 6' | 16' | 40" | 7172 | 3129 | 50' |
| C8M620 | 6' | 20' | 40" | 8658 | 1931 | 34' |
| C8M624 | 6' | 24' | 40" | 10032 | 1310 | 24' |
| C8M626 | 6' | 26' | 40" | 10778 | 1106 | 21' |
| C8M628 | 6' | 28' | 40" | 11525 | 947 | 18' |
| C8M630 | 6' | 30' | 40" | 12271 | 819 | 17' |
| C8M816 | 8' | 16' | 64" | 8950 | 2479 | 44' |
| C8M820 | 8' | 20' | 64" | 10860 | 1925 | 35' |
| C8M824 | 8' | 24' | 64" | 12742 | 1306 | 25' |
| C8M826 | 8' | 26' | 64" | 13707 | 1103 | 22' |
| C8M828 | 8' | 28' | 64" | 14671 | 944 | 19' |
| C8M830 | 8' | 30' | 64" | 15635 | 816 | 18' |
| C8M1016 | 10' | 16' | 84" | 11208 | 2111 | 39' |
| C8M1020 | 10' | 20' | 84" | 13572 | 1689 | 32' |
| C8M1024 | 10' | 24' | 84" | 15936 | 1372 | 28' |
| C8M1026 | 10' | 26' | 84" | 17118 | 1100 | 23' |
| C8M1028 | 10' | 28' | 84" | 18300 | 941 | 20' |
| C8M1030 | 10' | 30' | 84" | 19483 | 814 | 19' |

8" WALL TRENCH SHIELDS

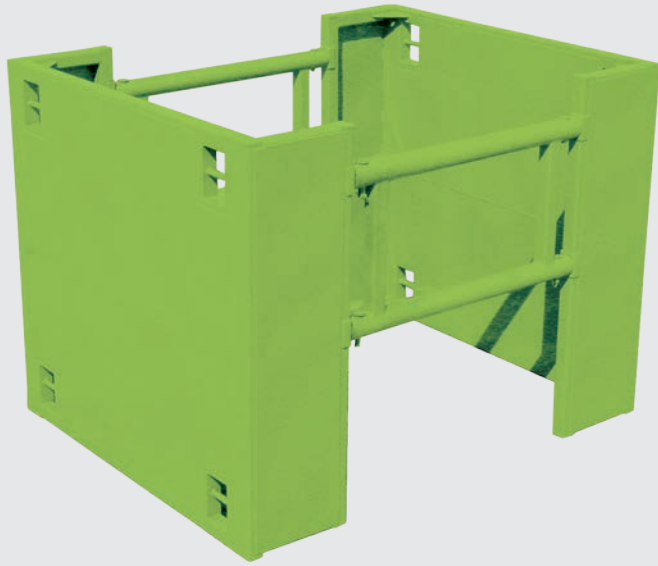


*Heavy Series,
for Most
Demanding
Capacities*

| 8" TRENCH SHIELDS • HEAVY SERIES | | | | | | |
|----------------------------------|------|-----|----------------|-------------------|----------------------------|-------------------|
| MODEL | SIZE | | PIPE CLEARANCE | WEIGHT (lb) (est) | SHIELD CAPACITY (psf) (lb) | DEPTH RATING C-60 |
| | H | L | | | | |
| DOUBLE WALL SHIELD | | | | | | |
| C8H416 | 4' | 16' | 16" | 5949 | 4261 | 50' |
| C8H420 | 4' | 20' | 16" | 7163 | 2631 | 44' |
| C8H424 | 4' | 24' | 16" | 8303 | 1784 | 32' |
| C8H426 | 4' | 26' | 16" | 8911 | 1507 | 26' |
| C8H428 | 4' | 28' | 16" | 9521 | 1290 | 23' |
| C8H430 | 4' | 30' | 16" | 10131 | 1115 | 20' |
| C8H616 | 6' | 16' | 40" | 8064 | 4340 | 50' |
| C8H620 | 6' | 20' | 40" | 9792 | 2679 | 46' |
| C8H624 | 6' | 24' | 40" | 11501 | 1817 | 32' |
| C8H626 | 6' | 26' | 40" | 12369 | 1535 | 28' |
| C8H628 | 6' | 28' | 40" | 13238 | 1313 | 24' |
| C8H630 | 6' | 30' | 40" | 14107 | 1136 | 22' |
| C8H816 | 8' | 16' | 64" | 10191 | 2479 | 45' |
| C8H820 | 8' | 20' | 64" | 12446 | 1983 | 36' |
| C8H824 | 8' | 24' | 64" | 14701 | 1652 | 32' |
| C8H826 | 8' | 26' | 64" | 15828 | 1525 | 28' |
| C8H828 | 8' | 28' | 64" | 16956 | 1309 | 25' |
| C8H830 | 8' | 30' | 64" | 18083 | 1133 | 22' |
| C8H1016 | 10' | 16' | 84" | 12840 | 2462 | 45' |
| C8H1020 | 10' | 20' | 84" | 15612 | 1970 | 37' |
| C8H1024 | 10' | 24' | 84" | 18384 | 1642 | 32' |
| C8H1026 | 10' | 26' | 84" | 19770 | 1515 | 29' |
| C8H1028 | 10' | 28' | 84" | 21156 | 1306 | 26' |
| C8H1030 | 10' | 30' | 84" | 22543 | 1131 | 24' |



SQUARE MANHOLE BOXES



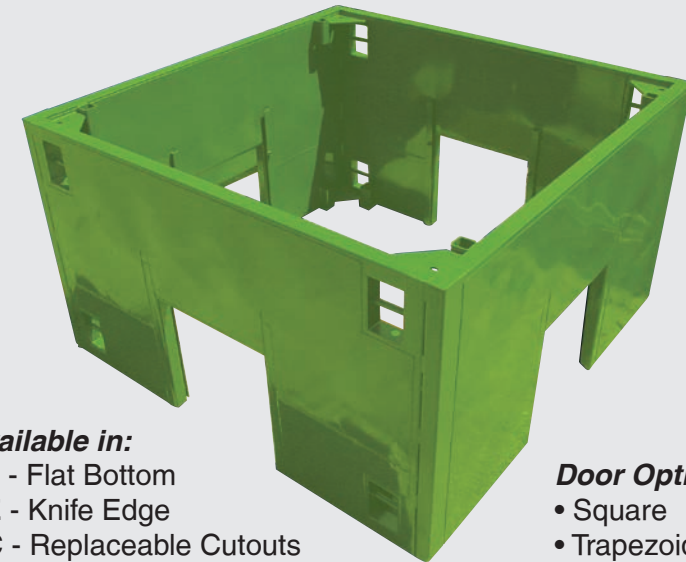
Custom Applications Available for Specific Needs

| SQUARE MANHOLE BOXES | | | | | | | | |
|---|--|-----|-----|----------------|-------------------|----------------------------|-------------------|--|
| MODEL | SIZE | | | PIPE CLEARANCE | WEIGHT (lb) (est) | SHIELD CAPACITY (psf) (lb) | DEPTH RATING C-60 | |
| | H | W | L | | | | | |
| SINGLE WALL SHIELD | | | | | | | | |
| C4MH888SW | 8' | 8' | 8' | 45" | 3953 | 715 | 16' | |
| C4MH81010SW | 8' | 10' | 10' | 45" | 4455 | 465 | 12' | |
| C4MH488SW | 4' | 8' | 8' | N/A | 2433 | 943 | 18' | |
| C4MH41010SW | 4' | 10' | 10' | N/A | 2820 | 612 | 12' | |
| DOUBLE WALL SHIELD | | | | | | | | |
| C4MH888DW | 8' | 8' | 8' | 45" | 4525 | 2784 | 38' | |
| C4MH81010DW | 8' | 10' | 10' | 45" | 5173 | 1782 | 34' | |
| C4MH81212DW | 8' | 12' | 12' | 45" | 6351 | 968 | 20' | |
| C4MH488DW | 4' | 8' | 8' | N/A | 2910 | 2952 | 40' | |
| C4MH41010DW | 4' | 10' | 10' | N/A | 3327 | 1890 | 26' | |
| C4MH41212DW | 4' | 12' | 12' | N/A | 3810 | 934 | 19' | |
| DOUBLE WALL - (2) REPLACEABLE CUT-OUTS | | | | | | | | |
| C4MH888RC24 | 8' | 8' | 8' | 24" CUTOUTS | 4237 | 2784 | 38' | |
| C4MH888RC36 | 8' | 8' | 8' | 36" CUTOUTS | 4237 | 2784 | 38' | |
| C4MH81010RC24 | 8' | 10' | 10' | 24" CUTOUTS | 4942 | 1782 | 34' | |
| C4MH81010RC36 | 8' | 10' | 10' | 36" CUTOUTS | 4942 | 1782 | 34' | |
| MHSTKBRKT | MANHOLE STACKING BRACKETS WITH PINS (SET OF 4) | | | | | | | |

4 SIDED - WATER TAP BOXES



CERDA is there when you need fixed four-sided protection. You have the option of 36" or 48" doors either square or trapezoidal. Either side or all sides. They are offered in a single wall or double wall.



Available in:
FB - Flat Bottom
KE - Knife Edge
RC - Replaceable Cutouts

Door Options:
 • Square
 • Trapezoid

| 4 SIDED - WATER TAP BOXES | | | | | | | | | |
|---|---------------------------|-----|-----|-------------------|----------------------------|--------------|------|------|------|
| MODEL | SIZE | | | WEIGHT (lb) (est) | SHIELD CAPACITY (psf) (lb) | DEPTH RATING | | | |
| | H | W | L | | | A-25 | B-45 | C-60 | C-80 |
| SINGLE WALL | | | | | | | | | |
| C4WT488SW | 4' | 8' | 8' | 3017 | 2240 | 40' | 34' | 32' | 28' |
| C4WT41010SW | 4' | 10' | 10' | 3281 | 2240 | 40' | 34' | 32' | 28' |
| C4WT888SW | 8' | 8' | 8' | 4587 | 1600 | 40' | 34' | 26' | 20' |
| C4WT81010SW | 8' | 10' | 10' | 5653 | 1600 | 40' | 34' | 26' | 20' |
| <i>Nominal dimensions are based on I.D.</i> | | | | | | | | | |
| DOUBLE WALL | | | | | | | | | |
| C4WT488DW | 4' | 8' | 8' | 3670 | 2240 | 40' | 35' | 26' | 20' |
| C4WT41010DW | 4' | 10' | 10' | 4022 | 2200 | 40' | 35' | 26' | 20' |
| C4WT888DW | 8' | 8' | 8' | 5889 | 2200 | 40' | 35' | 26' | 20' |
| C4WT81010DW | 8' | 10' | 10' | 7086 | 1700 | 40' | 34' | 25' | 18' |
| C4WTLEGS | WATER TAP LEGS (Set of 4) | | | | | | | | |



OCTAGON SHIELDS

ROUND CORRUGATED MANHOLE SHIELDS



*Designed
for
Personal
Protection*

| OCTAGON SHIELDS | | | | |
|----------------------|---|---------------|----------------------|--|
| MODEL | DESCRIPTION | DEPTH C-60 | WEIGHT (lb) (est) | |
| WITHOUT DOORS | | | | |
| OCTB-8X8X8 | 3" Single Wall - Octagon Shield - 8'Hx8'Wx8'L | 24' | 7727 | |
| OCTB-8X10X10 | 3" Single Wall - Octagon Shield - 8'Hx10'Wx10'L | 22' | 8737 | |
| OCTB-8X12X12* | 3" Single Wall - Octagon Shield - 8'Hx12'Wx12'L (2) Halves | 20' | 9697 | |
| WITH DOORS | | | | |
| OCTB-8X8X8-RC48 | 3" Single Wall - Octagon Shield - 8'Hx8'Wx8'L | 24' | 7835 | |
| OCTB-8X10X10-RC48 | 3" Single Wall - Octagon Shield - 8'Hx10'Wx10'L | 22' | 8851 | |
| OCTB-8X12X12-RC48* | 3" Single Wall - Octagon Shield - 8'Hx12'Wx12'L (2) Halves | 20' | 9739 | |

*Requires assembly - shipped in halves due to size

| ROUND CORRUGATED MANHOLE SHIELDS | | | | | |
|---|---|--------|----------------------|----------------------------------|-------------------------|
| MODEL | SIZE | | WEIGHT (lb) (est) | SHIELD CAPACITY (psf) (lb) | DEPTH RATING C-60 |
| | DIA. | HEIGHT | | | |
| CRMH8.5DX8T | 8.5' | 8' | 1609 | 1920 | 32' |
| CRMH8.5DX4T | 8.5' | 4' | 958 | 1920 | 32' |
| CRMH10DX8T | 10' | 8' | 1969 | 1862 | 32' |
| CRMH10DX4T | 10' | 4' | 1100 | 1862 | 32' |
| ROUND CORRUGATED MANHOLE SHIELDS W/ REPLACEABLE CUT-OUTS | | | | | |
| CRMH8.5DX8TRC | 8.5' | 8' | 2319 | 1649 | 25' |
| CRMH10DX8TRC | 10' | 8' | 2675 | 1649 | 25' |
| ROUND MANHOLE SHIELD ACCESSORIES | | | | | |
| RMHSTKPINS | ROUND MANHOLE STACKING PINS W/HARDWARE (SET OF 4) | | | | |
| RMHLEGS | ROUND MANHOLE ADJUSTABLE LEGS W/PINS (SET OF 4) | | | | |

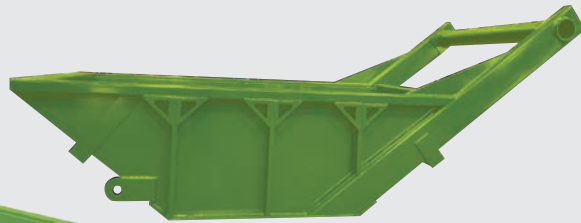


BEDDING BOXES ROCK BOXES

PIT KIT BRACKETS



**Plate Style
Pulling Bar**

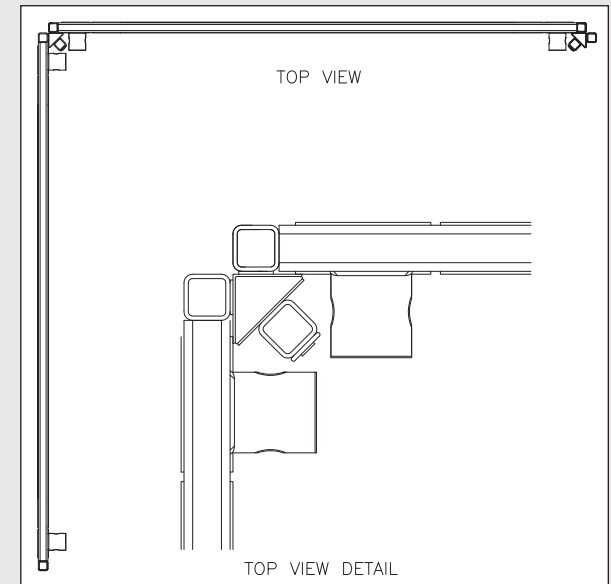
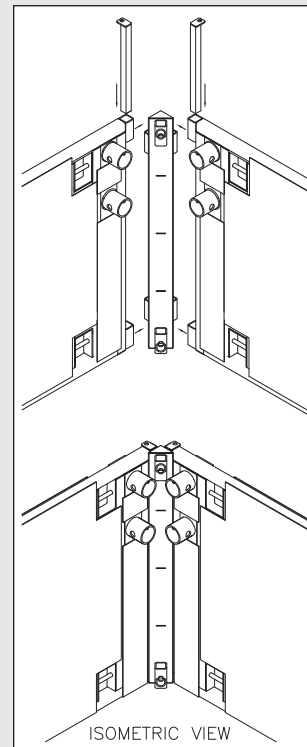


**Tube Style
Pulling Bar**

| BEDDING/ROCK BOXES (Plate Style Pulling Bar) | | | | | |
|--|--------------------|-----|-----|---------------------------------|----------|
| MODEL | SIZE | | | WEIGHT (EMPTY) (lb) (est) | CAPACITY |
| | WIDTH I.D./O.D. | L | H | | |
| STANDARD DUTY | | | | | |
| CBBS-5 | 51" / 60" | 13' | 44" | 4162 | 5 CYDS |
| CBBS-7 | 63" / 72" | 14' | 44" | 4953 | 7 CYDS |
| CBBS-8 | 57" / 66" | 16' | 44" | 5073 | 8 CYDS |
| CBBS-9 | 63" / 72" | 16' | 44" | 5614 | 9 CYDS |
| CBBS-12 | 87" / 96" | 16' | 50" | 6147 | 12 CYDS |
| Bottom Plate: 1/2" • Side Plates: 1/4" • End Plates: 1/4" • Includes Apparatus "A" | | | | | |
| HEAVY DUTY | | | | | |
| CBBH-9 | 63" / 72" | 16' | 44" | 6630 | 9 CYDS |
| CBBH-12 | 87" / 96" | 16' | 50" | 7372 | 12 CYDS |
| CBBH-15 | 87" / 96" | 20' | 50" | 8624 | 15 CYDS |
| Bottom Plate: 1/2" • Side Plates: 3/8" • End Plates: 3/8" • Includes Apparatus "A" | | | | | |
| BEDDING/ROCK BOXES (Tube Style Pulling Bar) | | | | | |
| STANDARD DUTY | | | | | |
| CSBS-5 | 51" / 60" | 13' | 44" | 4362 | 5 CYDS |
| CSBS-7 | 63" / 72" | 14' | 44" | 5142 | 7 CYDS |
| CSBS-8 | 57" / 66" | 16' | 44" | 5262 | 8 CYDS |
| CSBS-9 | 63" / 72" | 16' | 44" | 5803 | 9 CYDS |
| CSBS-12 | 87" / 96" | 16' | 50" | 6336 | 12 CYDS |
| Bottom Plate: 1/2" • Side Plates: 1/4" • End Plates: 1/4" • Includes Apparatus "A" | | | | | |
| HEAVY DUTY | | | | | |
| CSBH-9 | 63" / 72" | 16' | 44" | 6572 | 9 CYDS |
| CSBH-12 | 87" / 96" | 16' | 50" | 7561 | 12 CYDS |
| CSBH-15 | 87" / 96" | 20' | 50" | 8813 | 15 CYDS |
| Bottom Plate: 1/2" • Side Plates: 3/8" • End Plates: 3/8" • Includes Apparatus "A" | | | | | |
| OPTIONS | | | | | |
| APPARATUS "B" (add 500 lb) | | | | | |
| 8" SCH 120 Pull Pipe | | | | | |

CERDA offers a 4 sided Pit Application made out of standard trench shields using pit kit brackets.

Unlike other industry corner brackets that reduce capacities of shields, Cerda Pit Kit Brackets allow the standard shield tab data depth to remain valid as it provides 4 sided protection.



Brackets come in 4ft, 6ft, 8ft and 10ft lengths.

CERDA Pit Kit Brackets eliminate corner gaps.



Proudly Made in the USA



ALUMINUM SHIELDS SAF SHIELD

ALUMINUM SHIELDS SAV SHIELD



CERDA Industries'
Light-weight steel frame Aluminum Shields are one of the most common products used when excavator size is a factor and excavation safety requirements exceed aluminum hydraulic shoring.

These drop-in-place lightweight shields are ideal for rubber tire backhoes or mini excavators. Increasing in popularity, these durable lightweight shields are what fill the gap between hydraulic shoring and large steel trench shields.



Utilizes Fixed Spreaders

| SAF SHIELDS | | | | | | | | | |
|-------------------|------|-----|----------------|-------------------|----------------------------|--------------|------|------|------|
| MODEL | SIZE | | PIPE CLEARANCE | WEIGHT (lb) (est) | SHIELD CAPACITY (psf) (lb) | DEPTH RATING | | | |
| | H | L | | | | A-25 | B-45 | C-60 | C-80 |
| 4' SHIELDS | | | | | | | | | |
| CAP-SAF-0408 | 4' | 8' | 24" | 1262 | 1816 | 36' | 36' | 30' | 23' |
| CAP-SAF-0410 | 4' | 10' | 24" | 1481 | 1269 | 36' | 30' | 23' | 15' |
| CAP-SAF-0412 | 4' | 12' | 24" | 1650 | 849 | 30' | 21' | 16' | 11' |
| CAP-SAF-0414 | 4' | 14' | 24" | 1893 | 608 | 22' | 16' | 12' | 8' |
| CAP-SAF-0416 | 4' | 16' | 24" | 2020 | 456 | 18' | 12' | 10' | 7' |
| 6' SHIELDS | | | | | | | | | |
| CAP-SAF-0608 | 6' | 8' | 36" | 1563 | 1257 | 36' | 29' | 22' | 17' |
| CAP-SAF-0610 | 6' | 10' | 36" | 1823 | 1006 | 36' | 24' | 18' | 14' |
| CAP-SAF-0612 | 6' | 12' | 36" | 2082 | 838 | 31' | 20' | 16' | 12' |
| CAP-SAF-0614 | 6' | 14' | 36" | 2341 | 608 | 27' | 17' | 13' | 11' |
| CAP-SAF-0616 | 6' | 16' | 36" | 2600 | 456 | 22' | 13' | 11' | 9' |
| 8' SHIELDS | | | | | | | | | |
| CAP-SAF-0808 | 8' | 8' | 44" | 1848 | 1704 | 30' | 30' | 30' | 23' |
| CAP-SAF-0810 | 8' | 10' | 44" | 2162 | 1269 | 30' | 30' | 25' | 20' |
| CAP-SAF-0812 | 8' | 12' | 44" | 2476 | 849 | 30' | 23' | 18' | 15' |
| CAP-SAF-0814 | 8' | 14' | 44" | 2792 | 608 | 28' | 18' | 14' | 12' |
| CAP-SAF-0816 | 8' | 16' | 44" | 3200 | 456 | 23' | 14' | 12' | 10' |
| SPREADERS | | | | | | | | | |

5" SCH 80 pipe (non-adjustable)

LENGTHS: 24", 30", 36", 42", 48", 52", 60", 72", 84", 96", 108", 120", 132"

Aluminum Panel with Steel Frame



Utilizes Telescoping Spreaders

Shield is interactive with Cerda modular panels and posts

| SAV SHIELDS | | | | | | | | | |
|-------------------|------|-----|----------------|-------------------|----------------------------|--------------|------|------|------|
| MODEL | SIZE | | PIPE CLEARANCE | WEIGHT (lb) (est) | SHIELD CAPACITY (psf) (lb) | DEPTH RATING | | | |
| | H | L | | | | A-25 | B-45 | C-60 | C-80 |
| 6' SHIELDS | | | | | | | | | |
| CAP-SAV-0606 | 6' | 6' | 30" | 855 | 1632 | 25' | 25' | 25' | 22' |
| CAP-SAV-0608 | 6' | 8' | 30" | 1025 | 1204 | 25' | 25' | 21' | 16' |
| CAP-SAV-0610 | 6' | 10' | 30" | 1090 | 925 | 25' | 21' | 16' | 12' |
| CAP-SAV-0612 | 6' | 12' | 30" | 1350 | 634 | 25' | 14' | 12' | 8' |
| 8' SHIELDS | | | | | | | | | |
| CAP-SAV-0808 | 8' | 8' | 36" | 1305 | 1204 | 25' | 25' | 21' | 16' |
| CAP-SAV-0810 | 8' | 10' | 36" | 1525 | 925 | 25' | 21' | 16' | 12' |
| CAP-SAV-0812 | 8' | 12' | 36" | 1740 | 634 | 25' | 14' | 12' | 8' |
| SPREADERS | | | | | | | | | |

Adjustable Spreader Size: 21"-31", 26"-40", 32"-50", 38"-59", 44"-68", 56"-92" (3.5" x 3.5" SQ Tube)

Collar adapters available for use with 5" SCH 80 fixed spreaders.

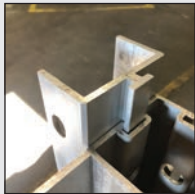
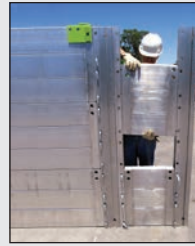


CBAS/BUILD-A-SHIELD MODULAR SYSTEM

HYDRAULIC VERTICAL SHORES



One System - Many Configurations



T slot adapter

Cerda T slot adaptable corner post. Increased wall thickness on post tab to reduce pin connection damage



T slot adapter with elongated pin holes



Elongated slotted pin hole pattern allows for easy assembly on uneven surfaces



T slot adapted for linear application (3 sided post)



T slot adapted for "L" shaped excavation (4 sided post)

| BUILD-A-SHIELD | | | | | | | | |
|----------------|------|-----|-------------------|----------------------------|--------------|------|------|------|
| MODEL | SIZE | | WEIGHT (lb) (est) | SHIELD CAPACITY (psf) (lb) | DEPTH RATING | | | |
| | H | L | | | A-25 | B-45 | C-60 | C-80 |
| CBAS-2X3 | 2' | 3' | 53 | 2586 | 30' | 30' | 30' | 30' |
| CBAS-2X4 | 2' | 4' | 66 | 1940 | 30' | 30' | 30' | 24' |
| CBAS-2X5 | 2' | 5' | 79 | 1552 | 30' | 30' | 27' | 22' |
| CBAS-2X6 | 2' | 6' | 91 | 1296 | 30' | 30' | 23' | 18' |
| CBAS-2X7 | 2' | 7' | 104 | 1108 | 30' | 26' | 20' | 16' |
| CBAS-2X8 | 2' | 8' | 117 | 970 | 30' | 24' | 18' | 14' |
| CBAS-2X10 | 2' | 10' | 143 | 776 | 30' | 20' | 14' | 12' |
| CBAS-2X12 | 2' | 12' | 173 | 598 | 24' | 14' | 10' | 8' |

Adjustable Spreader Size:

21"-31", 26"-40", 32"-50", 38"-59", 44"-68", 56"-92" (3.5" x 3.5" SQ TUBE)

CERDA Industries' Aluminum Hydraulic Vertical Shores are the most cost-effective way to shore excavations where more stable soil conditions exist. The units are designed to be used in linear applications where the shores can be installed and removed from above ground at the rate of the excavation process without ever entering the trench. This versatile system applies active pressure to the face of the excavation, allowing for less movement of the surrounding soils.

Cerda Industries has designed its vertical shoring to maximize the ease of transport, storage capacity, and versatility. The light-weight high strength aluminum alloy allows most units to be installed by one person

and provides for easy transport of the vertical shore down the excavation line. The socket side bumper pad gives the proper retracting angle for easy storage and movement. The rail sizes and cylinder ranges can vary according to your excavation requirements.

The innovative 4-port swivel protected cylinder pad provides an even greater versatility in changing hydraulic configurations.

Cerda manufactures both standard vertical shores and Cerda patented locking shores that have the flexibility to cover the needs of any fleet size. These features, along with our stringent focus on proper hydraulic sealing, is what sets Cerda Industries apart from the competition.



- Plastic translucent reservoir
- Longer stainless steel handle

| CYLINDER MODELS | |
|----------------------------------|-----------|
| MODEL | RANGE |
| MODEL - 27 | 17" - 27" |
| MODEL - 36 | 22" - 36" |
| MODEL - 46 | 28" - 46" |
| MODEL - 55 | 34" - 55" |
| MODEL - 64 | 40" - 64" |
| MODEL - 88 | 52" - 88" |
| STANDARD RAIL SIZES | |
| 1.5' - 3.5' - 5' - 7' - 9' - 12' | |
| Custom Sizes Available | |



Cerda Cylinder pad design is intended to protect the swivel fittings, with multiple configurations (inquire for more info). It eliminates the need for additional bracket protectors that competitors require.



PIT APPLICATION



The G3 Sheeting Guide System is **CERDA INDUSTRIES'** newest innovation in the trench shoring market. This system is one of the most cost efficient and in most applications can be installed in as little as 1 day. This pre-engineered shoring solution offers a great alternative to traditional sheet piling. It doesn't require a vibratory hammer or whaler system for install, allowing for a cleaner and safer workspace. The overlapping vertical steel sheeting makes crossing utilities easy. The G3 System can be installed in a Pit or Linear application, making it a truly versatile shoring solution. G3 Systems can also be used in a 2 sided application with pipe spreaders.

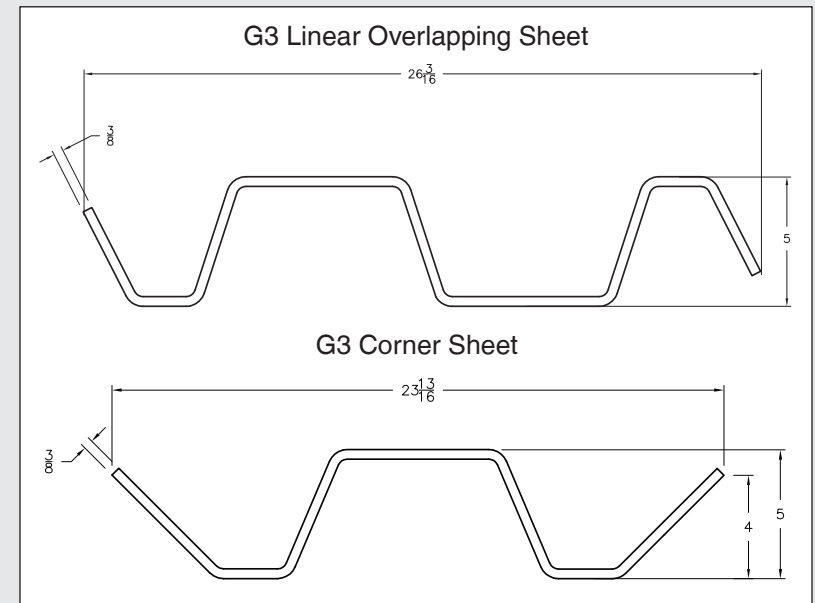
| G3 SHEETING GUIDE SYSTEM | | | | |
|--------------------------|-----------------------|-----|-------------|-------------------|
| MODEL | AVAILABLE PANEL SIZES | | WEIGHT (lb) | DEPTH RATING C-60 |
| | H | L | | |
| CSR-SG3-0612 | 6' | 12' | 7,591 | 20 |
| CSR-SG3-0616 | 6' | 16' | 9,991 | 20 |
| CSR-SG3-0620 | 6' | 20' | 12,490 | 20 |
| CSR-SG3-0624 | 6' | 24' | 14,988 | 20 |
| CSR-SG3-0630* | 6' | 30' | 18,735 | 20 |
| CSR-SG3-0636* | 6' | 36' | 22,433 | 20 |
| CSR-SG3-0640* | 6' | 40' | 24,615 | 20 |

*Tie back beam required

LINEAR APPLICATION



G3 System — 2 Sided application using spreader pipe.





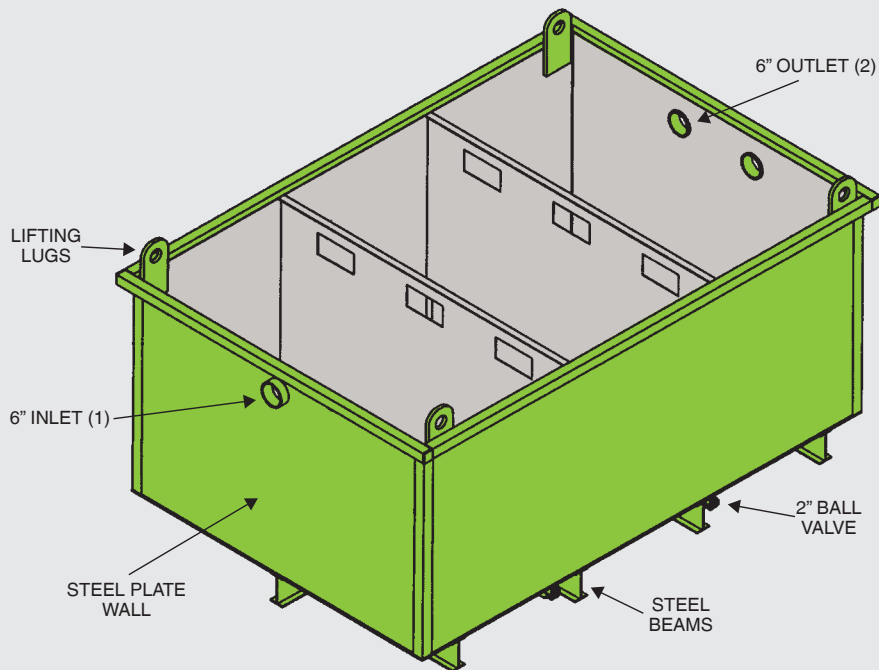
SEDIMENT TANKS

SLIDE RAIL SYSTEM



Capacity
3,000 Gallon
Empty Weight: 5,236 lb

Also available in
5,000 Gallon
Empty Weight: 6,579 lb



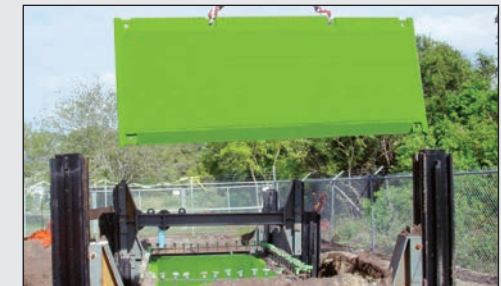
FEATURES:

- Steel Plate Walls
- HD Support Beams
- Easy Lift Eyelets
- 1 - 6" Inlet
- 2 - 6" Outlets
- Contact us for other sizes and capacities available

Your Safety Is Our Priority

CERDA Industries' Slide Rail System is a modular shoring system that is used in applications where soil conditions will not allow for conventional trench shield use. This cost-effective system is a great alternative to sheet pile driving which is more time-consuming and significantly more expensive to install.

Cerda Industries' Modular Slide Rail system has many innovative features that make it the premier slide rail system in the shoring industry. The system's modular design is extremely versatile, allowing you to configure your excavation to meet your specific requirements. It can be used in many applications, such as tank removal, bore pits, and vault installation, without disturbing the surrounding soils.



Easy glide panel and post connection. Same inside and outside panel design.

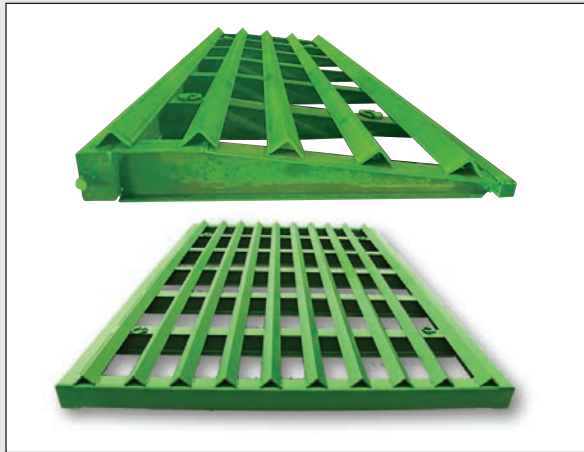


6" Double wall panel with extra heavy duty pounding pad and recessed pull eyes.



TIRE CLEANER RUMBLE GRIDS

CERDA Industries' tire cleaner/rumble grids are designed to remove mud from vehicle tires before entering a public street. An effective alternative to rock at exits.



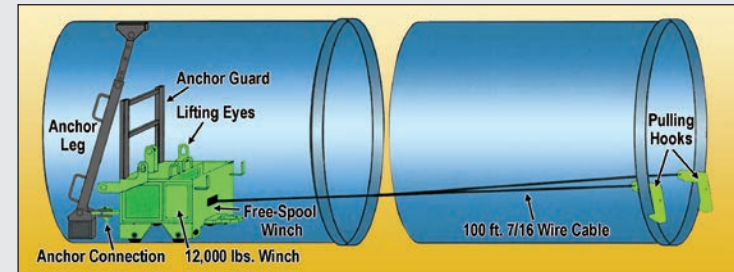
MANHOLE BRACE

CERDA Industries' manhole braces use 4 way telescoping hydraulic cylinders. Each leg expands up to 3 ft. Pumps and manifolds available.



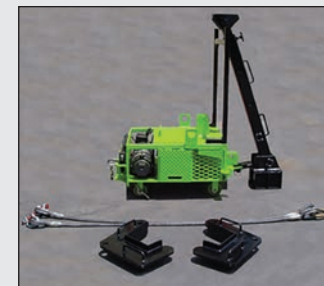
PIPE PULLER

PT-TIGER-12000



FEATURES

- 1. Anchor Legs** - Unit includes standard-duty anchor legs with 42-108 in. pipe capacity; heavy-duty anchor legs available for large pipe or box culvert.
- 2. Anchor Guard** - Protects unit from damage from an unsecured anchor.
- 3. Lifting Eyes** - For easy installation of Pipe Puller into excavation.
- 4. Free-Spool Winch** - Enables cable to be extended through pipe freely without using battery.
- 5. Anchor Connection** - Secure connector to anchor foot allows for better stability.
- 6. Frame Enclosure** - Metal enclosed sides and hinges protect inner workings from damage.



- 7. Heavy-Duty Winch** - Special electric DC winch enable efficient pulls from longer distances than competitive pullers.
- 8. 100 ft. 7/16 Wire Cable** - Set several pipe or culvert sections before moving the unit forward. Can be multiple reeved through snatch blocks for heavier tugs.
- 9. Pulling Hooks** - Heavy-duty steel pulling hooks fit snugly on the bell of the pipe or culvert. For large diameter applications, Pulling Beams are available in a variety of lengths.
- 10. "Quick Pin"** telescoping over-sleeve for different size pipe. Self-contained unit complete with on-board battery charger.



CERDA
INDUSTRIES

Est. 1999

WWW.CERDAINDUSTRIES.COM

713-242-7700

TRENCH SHORING SYSTEMS